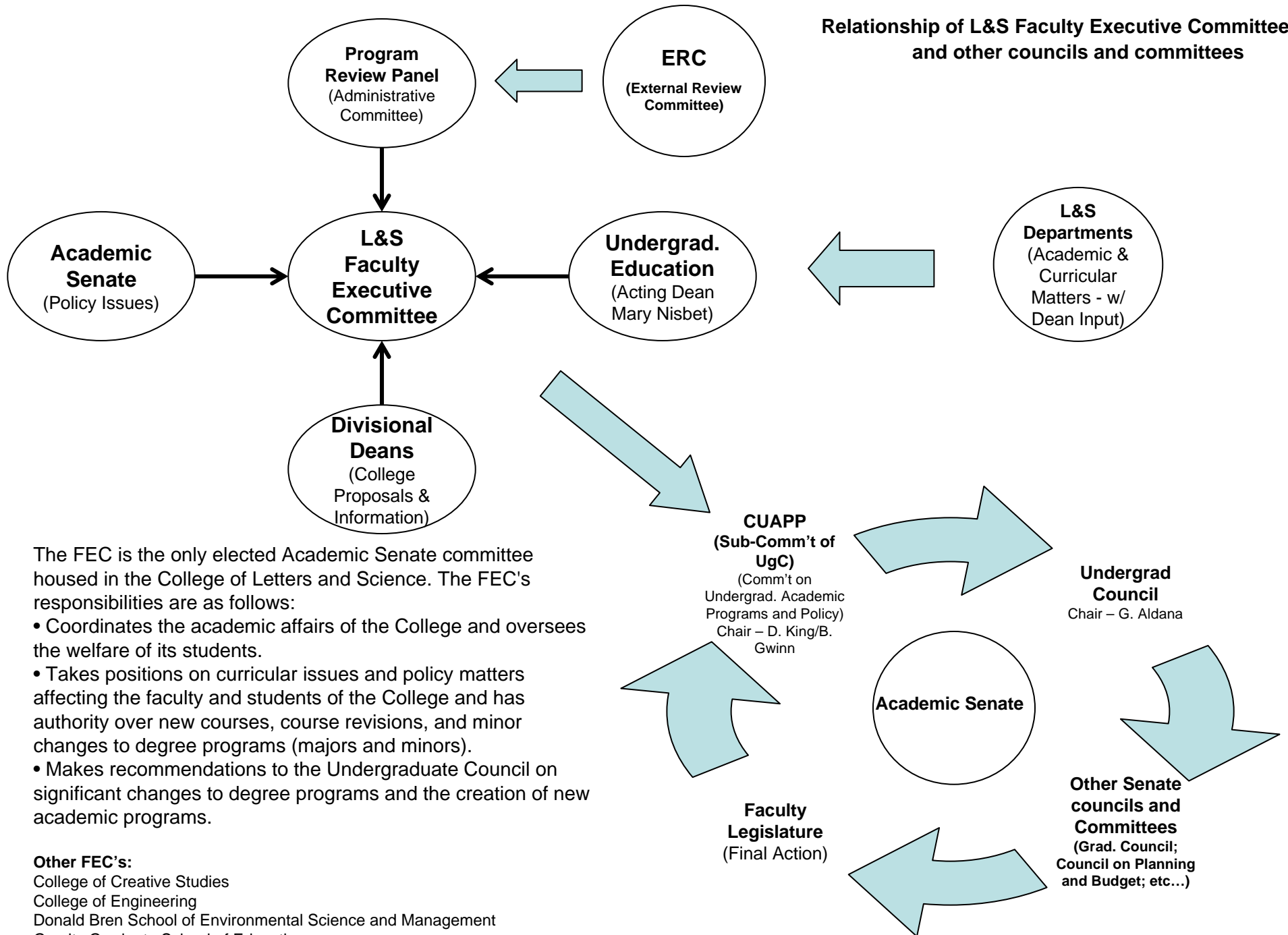


Relationship of L&S Faculty Executive Committee and other councils and committees



The FEC is the only elected Academic Senate committee housed in the College of Letters and Science. The FEC's responsibilities are as follows:

- Coordinates the academic affairs of the College and oversees the welfare of its students.
- Takes positions on curricular issues and policy matters affecting the faculty and students of the College and has authority over new courses, course revisions, and minor changes to degree programs (majors and minors).
- Makes recommendations to the Undergraduate Council on significant changes to degree programs and the creation of new academic programs.

Other FEC's:

- College of Creative Studies
- College of Engineering
- Donald Bren School of Environmental Science and Management
- Gervitz Graduate School of Education